



Tudhoe Learning Trust

Safeguarding our children: Early Help through to Child Protection

Policy and Guidance

Approved by: Trust Chief Executive Officer

Date: September 2024

Last reviewed on: September 2024

Next review due by: September 2025

Safeguarding and Child Protection Training Summary

All our Trust schools comply with the advice laid down in 'Working Together to Safeguard Children' 2023 and 'Keeping Children Safe in Education' September 2024 to undertake regular training.

A record of those trained is retained and certificates are kept, where appropriate to verify the attendance of individuals. Child protection and safeguarding training form a key part of our induction processes. All staff will receive regular updates regarding child protection and safeguarding, including online safety, as necessary and at least annually.

Training for the designated safeguarding lead and other designated teachers in school is also undertaken regularly and updated at least every two years.

We recognise that, as a minimum, schools should also ensure that the Designated Safeguarding Lead undertakes Prevent awareness training and is thus able to provide advice and support to other members of staff on protecting children from the risk of radicalisation (The Prevent duty DFE 2023).

The Designated Safeguarding Leads for the Trust are Tim Cassap, Associate Head Teacher and Laura Parker, HR Manager. Vivienne Ingleton, Director has a strategic responsibility.

	Minimum Training Undertaken
Designated Safeguarding Lead (including Trust staff such as HR Manager and Associate Head Teacher)	DSL Training Prevent, CSE, FGM, Child Criminal Exploitation (Incl County Lines), Online Safety
Deputy Designated Safeguarding Lead(s)	DSL Training Prevent, CSE, FGM, Child Criminal Exploitation (Incl County Lines), Online Safety
Nominated Governor for Child Protection and Safeguarding	Safeguarding Induction, KCSIE update, Regular safeguarding training, Online Safety
Governor(s) and Staff with Safer Recruitment Training	Safer Recruitment and refresher Training
Whole Staff & Governors	KCSIE Update, Safeguarding Induction, Regular Safeguarding Training including Online Safety

Local Authority Designated Officer (LADO):

Sharon Lewis / Louise Brookes 03000 268835

CYPSSLADOsecure@durham.gov.uk

First Contact Service: 03000 26 79 79

Contents

1. Introduction

2. Main Elements of the Policy

- I. Establishing a safe environment in which children can learn and develop.
- II. Ensuring we practice safe recruitment in checking the suitability of staff and volunteers to work with children.
- III. Training and supporting staff to equip them to appropriately recognise, respond to and support children who are vulnerable and may be in need of safeguarding.
- IV. Raising awareness of other safeguarding issues, boosting resilience and equipping children with the skills needed to keep them safe.
- V. Developing and implementing procedures for identifying and reporting cases, or suspected cases, of abuse.

3. Overview: Safeguarding

- Definition of 'safeguarding'
- Safeguarding within our schools
- Safeguarding throughout school life

4. Child Protection Within Overall Safeguarding and Early Help Arrangements for All Children/Young People in School

- Life at home
- Signs and behaviours of concern
- Early Help; Single Assessment Procedure and Practice Guidance
- Child in Need
- Child Protection and significant harm
- Prepare for the unexpected
- Low level concerns

5. Multi-Agency Work in Child Protection

- Initial Child Protection Conference: school responsibilities
 - Attendance
 - Preparation of a report
 - Chronology of significant events
 - Sharing of the report
- Membership of a Core Group
- Review Child Protection Conference

6. Information-Sharing

- Parents/carers
- School staff
- Children moving to another school and the transfer of records
- County guidance and protocols

7. Allegations Against Staff and Volunteers

8. Safe Touch

9. Physical Control and Restrictive Physical Intervention: Use of Reasonable Force

10. The Prevent Duty

11. Child Sexual Exploitation

12. Female Genital Mutilation

13. Online Safety

14. Child on Child Abuse sexual violence and sexual harassment

15. Child Criminal Exploitation including County Lines

16. Serious Violence

17. Mental Health

18. Domestic Abuse

Appendices

Appendix 1 - Summary of multi-agency meetings

Appendix 2 - Durham Prevent Flowchart

1. Introduction

Children maximise their potential in an environment which is safe, secure and supportive of all their needs, including any needs they have for protection from abuse.

Our Trust schools are committed to promoting the welfare of all children by working in partnership with parents and carers, the Local Authority (LA) and multi-agency partners in early help and child protection, in accordance with locally agreed multi-agency safeguarding arrangements procedures and practices.

Our policy applies to members of the school community in its widest sense. Thus, this includes children and young people, their parents/carers, school staff, governors, visitors, specialist staff, and the local and wider community where they interface with the school. Within its framework, the policy outlines entitlements and responsibilities in securing the protection of children who attend the school.

Our policy is underpinned and shaped by legislation and guidance contained in a variety of documents including: -

- The Children Act 1989; Children Act 2004.
[Children Act 1989 \(legislation.gov.uk\)](#); [Children Act 2004 \(legislation.gov.uk\)](#)
- The Education Act 2002; Education and Inspections Act 2006.
[Education Act 2002 \(legislation.gov.uk\)](#); [Education and Inspections Act 2006 \(legislation.gov.uk\)](#)
- Working Together to Safeguard Children December 2023
[Working together to safeguard children - GOV.UK \(www.gov.uk\)](#)
- Local Multi-Agency Safeguarding Arrangements and Procedures
[www.durham-scp.org.uk](#)
- What to do if you're worried a child is being abused - DfE 2015.
[Stat guidance template \(publishing.service.gov.uk\)](#)
- Keeping Children Safe in Education. Statutory guidance for schools and colleges. September 2024
[Keeping children safe in education - GOV.UK \(www.gov.uk\)](#)
- Use of reasonable force. Advice for head teachers, staff and governing bodies. DfE. July 2013.
[Use of reasonable force in schools - GOV.UK \(www.gov.uk\)](#)
- Trust Confidential Reporting Code.
- Information Sharing Agreement: County Durham Safeguarding Adults Inter-Agency Partnership
[Good practice guidance for professionals - Durham Safeguarding Adults \(safeguardingdurhamadults.info\)](#)
- Procedures for locating missing pupils and the removal of pupils from roll. *June 2017*
See DfE document "Children Missing Education" Sept 2016
https://assets.publishing.service.gov.uk/government/uploads/system/uploads/attachment_data/file/550416/Children_Missing_Education_-_statutory_guidance.pdf
- Prevent Duty Guidance for England and Wales: HM Government 2023
[Prevent Duty Guidance for England and Wales: HM Government 2023](#)
- The Prevent Duty - An introduction for those with safeguarding responsibilities 2023
<https://www.gov.uk/government/publications/the-prevent-duty-safeguarding-learners-vulnerable-to-radicalisation/the-prevent-duty-an-introduction-for-those-with-safeguarding-responsibilities>

To emphasise the caring ethos of our Trust schools, the staff and governing body are committed to the following principles: -

- The welfare and well-being of each child is of paramount importance.

- Our policy works on the premise that abuse takes place in all communities and that school staff are particularly well-placed to identify and refer concerns and to act to prevent children and young people from being abused.
- We respect and value each child as an individual.
- We are a listening school, and encourage an environment where children feel free to talk, knowing that they will be listened to.
- The protection of children from abuse is a whole-school issue, and the responsibility therefore of the entire school community.
- Our policy will be accessible in terms of understanding and availability. Regular training will ensure all adults in school are aware of indicators of concern or abuse and colleagues that act as designated safeguarding leads that such information should be promptly passed on to.
- Our policy will be developed and kept up to date with information from our relevant partners in early help and child protection as well as national documentation issued by HM Government and The Department for Education.
- We will use the school curriculum to resource our children to protect themselves from abuse, both as victims and as potential perpetrators.
- The school runs in an open, transparent way.
- We ensure that school leaders, including governors, exercise strategic oversight of all aspects of safeguarding through regular training for example using resources from The Key and National Online Safety, sharing safeguarding reports at Governors' Meetings, sharing Safeguarding Audit outcomes and any subsequent action plans and regular meetings with the Safeguarding governor.

2. The Five Main Elements to the Policy

(1) Establishing a safe environment in which children can learn and develop

KCSIE September 2024 (para 348) states that 'Good safeguarding requires continuing commitment from governing bodies, proprietors, and all staff to ensure the safety and welfare of children is embedded in all of the organisation's processes and procedures, and consequentially enshrined in its ethos'.

Establishing a safe environment links to the school's overall safeguarding arrangements and duty of care to all pupils.

The Trust has a number of policies that relate to overall safeguarding arrangements and its duty of care to all pupils. Annual audits are carried out independently at each academy and the Trust provide all new and existing employees access to our Health and Safety Policy and Handbook.

Use of our school for non-school activities:

Where we hire or rent out our school facilities/premises to organisations or individuals we will ensure that appropriate arrangements are in place to keep children safe in line with Keeping Children Safe In Education September 2024 (paras 169 & 170):

- We will seek assurance that the provider has appropriate safeguarding and child protection policies and procedures in place;
- We will ensure that arrangements are in place for the provider to liaise with us on these matters where appropriate, whether the children who attend are on our school roll or not;
- As a condition of use, these safeguarding requirements will be included in any transfer of control agreement and failure to comply will lead to termination of the agreement.

- will expect providers to have the safeguarding arrangements set out in the We following guidance in place: Keeping children safe in out-of-school settings - GOV.UK (www.gov.uk)

Pupils Arriving and Leaving School on Local Authority Arranged Transport

We will inspect a sample of the badges of the drivers and PAs operating transport arranged by Integrated Passenger Transport Group periodically, to check the necessary badges are held and displayed. Any concerns or discrepancies will be reported as soon as possible to IPTG Monitoring team (IPTMonitoring@durham.gov.uk). We will retain a record of the inspection and outcome to demonstrate these actions.

(2) Ensuring we practice safe recruitment in checking the suitability of staff and volunteers to work with children

Staff that receive Safer Recruitment training are outlined on the front page of this document.

Our Trust schools will comply with the requirements outlined in local multi-agency safeguarding arrangements ‘Key Safeguarding Employment Standards’ and in the DSCP Child Protection procedures as well as national documentation in ‘Keeping Children Safe in Education’ September 2024, Part 3.

Our schools will refer to its responsibilities regarding safeguarding and child protection in all adverts, job descriptions, and/or to its profile in the school, in the general information distributed with application forms. Annex C in ‘Keeping Children Safe in Education’ September 2024 has specific details of the role of the designated safeguarding lead.

- Our school will adhere to The Rehabilitation of Offenders Act 1974 (amended 2020) and the Exceptions Order 1975 taking account of any declarations at the point of interview and not during shortlisting from application.
- Our school will undertake appropriate pre-employment checks, including online searches, on all staff working in school, including criminal record checks (DBS checks), barred list checks and prohibition checks together with references and interview information, as detailed in Part Three: Safer Recruitment in ‘Keeping Children Safe in Education’, September 2024. We will also ensure that relevant staff are made aware of their responsibilities to disclose anything relating to “Disqualification Under the Childcare Act 2006” [Disqualification under the Childcare Act 2006 - GOV.UK \(www.gov.uk\)](#)
- We will follow good practice advice and inform shortlisted candidates that online searches will be carried out.

As outlined in ‘Keeping Children Safe in Education’, September 2024 (paras 238-248) the level of DBS certificate required, and whether a check for any prohibition, direction, sanction, or restriction is required, will depend on the role that is being offered and duties involved. As most staff will be engaging in regulated activity, an enhanced DBS certificate which includes barred list information, will be required for most appointments. Risk assessments will be undertaken to determine the level of checks needed for any volunteers within our school (KCSIE 2024 paras 311-314).

In schools, a **supervised** volunteer who regularly teaches or looks after children is not in regulated activity. It is the policy of the Trust that all our volunteers require a DBS certificate. DBS certificates for all employees, Directors and Governors are currently renewed every 5 years.

In our schools:

- Volunteers without a DBS certificate will not be left unsupervised with groups of children, nor will they be in areas where they cannot be fully seen by the supervising teacher.
- In accepting the offer of help from volunteers, especially those unknown, staff are aware that schools in general are attractive places for 'unsafe' volunteers.
- Schools may be places where those with unhealthy interests in children seek to find employment (paid or otherwise). We will be vigilant about all inappropriate behaviour with children that gives cause for concern. The Head Teacher and governors are aware of the Trust Confidential Reporting Code arrangements.
- Supply staff - we ensure that appropriate DBS checks are carried out before employing supply staff. We will obtain written notification that the appropriate checks have been completed. We will also check that the member of supply staff is the same person for whom these checks have been made.
- All those involved in recruitment are made aware of their responsibilities in connection with staff appointments and similarly aware of their liabilities especially if they fail to follow the Trust Recruitment Policy and Procedure.
- Directors of the Trust and members of the governing body in our schools will be subject to an enhanced DBS check and a Section 128 check.
- Volunteers and helpers will not be given tasks beyond their capabilities and therefore where they might feel under pressure.
- Volunteers and helpers should feel able to discuss difficulties with the teacher, who will respond with advice and additional guidance and supervision.
- Volunteers and helpers will not have the opportunity to feel that they are in charge and thus in a position of power, which may then be abused.
- Volunteers, helpers and staff new to the school are given documentation that covers behaviour guidelines for staff and volunteers.

Alternative Provision (KCSIE September 2024 Para 333):

Where we place a pupil with an alternative provision provider (AP Provider), we will understand that we continue to be responsible for the safeguarding of that pupil & will ensure that we are satisfied that the provider can meet the needs of the pupil by:

- Obtaining written confirmation from the AP Provider that appropriate checks have been carried out on individuals working at the establishment.

(3) Training and supporting staff to equip them to appropriately recognise, respond to and support children who are vulnerable and may need safeguarding

To ensure that we train and support our staff to be equipped to recognise, respond to and support children who are vulnerable and may need safeguarding, we will include:

- Creating the right culture and environment so that staff feel comfortable to discuss matters both within and outside (including online) the workplace.
- The child protection policy which does, amongst other things, also include the policy and procedures to deal with child-on-child abuse.
- The behaviour policy (which does include measures to prevent bullying, including cyberbullying, prejudice-based and discriminatory bullying, including LGBT+). This policy takes the 'Behaviour in Schools Guidance February 2024' into account. [Behaviour in schools - GOV.UK \(www.gov.uk\)](https://www.gov.uk/guidance/behaviour-in-schools)
- The staff code of conduct policy (sometimes called a staff behaviour policy).
- The safeguarding response to children who go missing from education.

- The role of the designated safeguarding lead (including the identity of the designated safeguarding lead and any deputies).

Copies of policies and a copy of Part One of Keeping Children Safe in Education, September 2024 will be provided to staff and volunteers at induction. All staff, volunteers and supply staff are **required to read** this.

All staff, volunteers and supply staff will be made aware of:

- Our local ‘early help’ process and their role in it.
- The process for making referrals to Children’s Social Care and sections 17 and 47 that may follow a referral, along with the role they may be expected to play in such assessments.
- What to do if a child tells them he or she is being abused or neglected, along with maintaining an appropriate level of confidentiality, involving only those who need to be involved, and never promising a child that they will not tell anyone about their abuse.
- The practical government guidance document ‘Guidance for safer working practice for those working with children and young people in education settings’, Safer Recruitment Consortium, Feb 2022. [Home\(saferrecruitmentconsortium.org\)](https://www.saferrecruitmentconsortium.org)

All adults working in school will receive annual safeguarding and child protection training which is regularly updated. The DSL is responsible for ensuring that the training reflects new priorities and concerns within the County and other multi-agency local priorities. Adults will also receive updated training and guidance throughout the year as necessary.

The date and the names of delegates at these sessions are recorded and held securely to ensure all staff are appropriately trained.

Staff responsible for safeguarding

Our Designated Safeguarding Lead and deputies will be given sufficient time and training to provide them with the knowledge and skills required to carry out their roles. This will be updated every two years and a record of this training will be kept. In addition to this formal training, their knowledge and skills will continually be updated through a range of means (for example via e-bulletins, attendance at safeguarding networks or through reading), at regular intervals, and at least annually, to keep up with any developments.

(4) Raising awareness of other safeguarding issues, boosting resilience and equipping children with the skills needed to keep them safe

We raise other related issues with children and their parents/carers in the following ways:

Children and Young People

We are mindful that children are safe from terrorist and extremist material when accessing the internet in our schools. All Trust schools have a Firewall filtering and monitoring system in place for this and other potentially risky content. The school Designated Safeguarding Lead will review IT records to see whether it links up with other safeguarding concerns about particular individuals. Online safety is continually emphasised in line with Keeping Children Safe in Education, September 2024 and DfE ‘Teaching Online Safety in Schools’, January 2023. [Teaching online safety in schools - GOV.UK \(www.gov.uk\)](https://www.gov.uk)

Other themes are addressed through our school curriculum, policies, PSHE and RHSE programmes, assemblies, outside visitors and trainers. These may be part of our typical, planned curriculum or in response to issues arising in school, the community or nationally.

Names (and photographs) of staff and adults will be on display in school that children can speak to if they have concerns (school, family or community issues).

Parents/Carers

Our school brochure, web site and other means of communication with parents will re-enforce the message that our school is committed to the welfare and protection of all children in its care. School staff and governors take this duty of care very seriously.

Newsletters, letters to parents about specific issues, our school web site and Parents Evenings are used to disseminate and re-enforce key safeguarding and child protection information.

Parents are told that it is essential that school records are kept up to date. Parents are asked to keep school informed of any changes. Trust schools will update records held to reflect:

- Current address and telephone contacts. We are aware that, it is good practice to hold more than one emergency contact number for each child and this is particularly important where children who are a safeguarding or welfare concern.
- which adults have parental responsibility
- court orders which may be in force
- children on the Child Protection list
- the child's name at birth and any subsequent names (taking care over unusual spellings)
- any other changes to home circumstances

Parents have been consulted on our RSHE policy.

(5) Developing and implementing procedures for identifying and reporting cases, or suspected cases, of abuse

The culture of our school is that 'it could happen here'. Staff are trained to identify indicators of abuse and are aware of circumstances that could potentially make children and young people more vulnerable to abuse.

Names of designated safeguarding leads in school

All staff, including peripatetic, adults working with children in school, supply staff and pupils on work-placement are made aware of who these colleagues are. It is recognised that new faces in school can be the person a child might disclose something to.

Listening to Children and Receiving Disclosures

We embrace our role as a listening school where children can discuss concerns with any member of staff or adult who works with them. Staff (teaching and support) will make time and be available should children approach them with a situation they are worried about.

Concerns must be taken seriously and at face-value. It is easy to make speedy judgements based on previous knowledge of the child or young person.

Staff receiving a disclosure are unable to promise 'keeping a secret' or confidentiality. They will need to explain that depending on what the child says they might need to share the information with someone who deals with these concerns in school.

If the child does not wish to continue and say anything further the adult should pass on the concern to the designated safeguarding lead that might wish to keep an eye on that pupil and may well be aware of other issues of concern.

'Staff should never promise a child that they will not tell anyone about a report of any form of abuse, as this may ultimately not be in the best interests of the child. All staff should be able to reassure victims that they are being taken seriously and that they will be supported and kept safe. A victim should never be given the impression that they are creating a problem by reporting abuse, sexual violence or sexual harassment. Nor should a victim ever be made to feel ashamed for making a report.' Keeping Children Safe in Education, September 2024, Part 1 (paras 15-16).

When the member of staff next comes across the child concerned, it would be appropriate to ask how they are and remind them that they are able to come and talk when they wish.

Once the child has made a disclosure, the member of staff would record what has been said, inform First Contact and follow their advice. Staff should never speak to another sibling in the family to make enquiries.

Recording concerns

ALL concerns and disclosures passed to the designated safeguarding leads must be written, signed and dated on the relevant record form or shared through the electronic monitoring system CPOMS. All concerns recorded should be factual; staff will avoid using emotive language & recording their opinions.

Staff will write the exact words used by the child when a disclosure is made. Any original notes/jottings/reminders made by the adult will be stapled to any handwritten forms as first-hand information that could be important if a case went to court or scanned/written up in the electronic monitoring system. The more relevant details staff document the better (approximate size, colour of injury, which arm, if burn is scabbing over etc.) Staff can express concern about an injury (open ended questions) but will not ask direct questions. They will never do so in front of other children.

If there is concern about another member of staff or adult working in school, the matter must be passed straight to the Head Teacher or if the concerns relate to the Head Teacher, the matter should be passed to the Trust Chief Executive Officer or the Trust HR Manager via the Trust Office 01388 811765 or office@tudhoelearningtrust.co.uk The member of staff concerned must not be spoken to.

Please remember:

- (i) The child should be allowed to make the disclosure at their own pace and in their own way.
- (ii) The member of staff should avoid interrupting except to clarify what the child is saying but;
- (iii) Should not probe for any information that the child does not volunteer.

Concerns about staff members or other adults in school

If there is concern about another member of staff or adult working in school, the matter must be passed straight to the Head Teacher. The member of staff concerned must not be

spoken to. If the concern regards the Head Teacher, this should be passed onto the Trust Chief Executive Officer. If the concern relates to the Chief Executive Officer, the concern should be referred to the Trust Chair of Directors. Further information is included in Section G of this policy and KCSIE 2024, Part 4.

Recording and Response of the designated lead professional

All information received is stored in the child's electronic record on CPOMS as a simple central chronology of significant events. Access to this information is restricted and records are kept securely and away from the child's individual school records. (The child's school record is marked to show the existence of any concerns). Our Trust designated safeguarding leads can access these documents in an emergency or in the event of an enquiry for information by the MASH (Multi-Agency Safeguarding Hub) Team. The MASH Team may contact us if there are any issues that are ongoing outside of school and this chronology of events will inform of any concerns that relate to school life.

We keep a 'chronology of significant events' for all children causing concern in school, in the event that the MASH make contact about issues beyond school and inform any other concerns in school.

We ensure that records include:

- a clear and detailed summary of the concern
- details of how the concern was followed up and resolved
- notes of any actions taken, decisions reached and the outcome

Discussing concerns with the First Contact Service - 03000 26 79 79

The Trust recognises that our schools have a pivotal role to play in multi-agency safeguarding arrangements and therefore must ensure that they contribute to multi-agency working in line with statutory guidance.

We use the local authority Referral Form for notifying First Contact of concerns. Early help referrals are completed online using the following link:

https://doitonline.durham.gov.uk/service/Early_Help_Referral via DCC CRM system.

Procedures detailing local multi-agency arrangements, including detailed information about the management of individual cases, may be found at www.durham-scp.org.uk. The threshold document, procedures and guidance are regularly reviewed, and our Trust schools will check DSCP website for any amendments.

If a concern is taken up as a **referral** under section 47: Child Protection, actual or likelihood of significant harm, parents or carers will be informed of this **unless to do so would place the child at further risk of harm.**

If the child requires immediate medical attention staff will accompany the child to the nearest Accident and Emergency Department. First Contact will be informed immediately if the injuries are linked to a child protection matter, so an appropriate paediatrician sees the child. The Director of Children and Young People's Services will be informed, and parents will be notified of the action taken.

If the situation is an emergency and staff are unable to speak to First Contact, we will phone the Police on 101 and ask to speak to a colleague in the Vulnerability Unit concerning a child.

Police Switchboard: 0345 6060365 or 101
Ask for the nearest local Vulnerability Unit to school

Discussions with First Contact will be followed up in writing

Discussions of concern and requests for support will be followed up in writing, using the referral form. Early help referrals are completed online using the following link: https://doitonline.durham.gov.uk/service/Early_Help_Referral via DCC CRM system. A copy is kept on the child's concern file.

If a member of staff feels that the designated safeguarding lead and/or Head Teacher are not taking concerns seriously enough, then it is appropriate for them to tell that person that they are going to consult with First Contact themselves.

'Any staff member who has a concern about a child's welfare should follow the referral processes set out in Keeping Children Safe in Education, 2024, Part 1.

First Contact Service
firstcontact@durham.gov.uk
Telephone: 03000 26 79 79

Attendance at Strategy meetings if assessed to be child protection concern

Strategy meetings are one of four multi-agency meetings as part of Child Protection processes. Local multi-agency procedures have detailed guidance about these meetings www.durham-scp.org.uk

The threshold document is available on the DSCP website.

School staff may be invited to a strategy meeting. These multi-agency meetings are called to decide whether the threshold for an s47 enquiry should commence to investigate the concerns that have been raised.

These meetings may be called at short notice and we recognise that appropriate staff from our Trust schools should attend wherever possible. If the school is the referring agency, they should be invited to attend these meetings. Our schools are able to offer a venue if there is a suitable room where confidentiality can be assured.

Staff should make available any handwritten notes, dated and signed or electronic CPOMS entries, as well as other records from the concern file including the single agency chronology of concerns. Any further written evidence from the child: stories, drawings etc. should be brought to the meeting.

In school, staff will monitor the child discreetly for any further concerns or signs that are worrying and give support and reassurance to the child.

All information will be treated with discretion and confidentiality and shared in accordance with the National Guidance on information sharing and the GDPR and Data Protection Act 2018.

If concerns are not substantiated following the section 47 enquiries our schools will work with other agencies to determine what further support the family and child require. The school will continue to monitor and support the child.

3. Overview: Safeguarding

What school and college staff should know and do: A child centred and coordinated approach to safeguarding.

‘Keeping Children Safe in Education 2024’ states safeguarding and promoting the welfare of children is **everyone’s** responsibility:

‘protecting children from maltreatment, preventing the impairment of children’s mental and physical health or development, ensuring that children grow up in circumstances consistent with the provision of safe and effective care; and taking action to enable all children to have the best outcomes. ‘Children’ includes everyone under the age of 18.’
(paras 2 - 3)

Safeguarding within our Trust schools

Everyone who encounters children, and their families has a role to play in safeguarding children. School staff are particularly important as they can identify concerns early and provide help for children, to prevent concerns from escalating. Schools and their staff form part of the wider safeguarding system for children by working with our 3 safeguarding partners in Durham Safeguarding Children Partnership - Durham County Council, Durham Constabulary and the Clinical Commissioning Groups to promote the welfare of children and protect them from harm.

Safeguarding children permeates all aspects of our work as a school, with a preventative role to inform and boost the resilience of all pupils by enhancing protective factors in their lives.

Accordingly, this policy links with many other related policies in our schools, including:

- School Behaviour policy
- Curriculum policy
- Anti-bullying policy, including on-line safety policy and Child on Child abuse policy
- Health and Safety policies
- Medication in school/First Aid policies
- Intimate care policy
- School visits including risk-assessments
- Children with Special Educational Needs (SEN) and Looked After Children (LAC)
- Accessibility plan
- Relationships and Sex Education Policy
- Managing Allegations against Staff Policy
- Complaints policy
- Remote Learning Policy

This policy is also linked to local multi-agency safeguarding arrangements. Current, up to date documentation can be found at [Durham Safeguarding Children Partnership \(durham-scp.org.uk\)](https://durham-scp.org.uk) and include:

- Managing Allegations against Staff (Durham online local partnership safeguarding arrangements and policies)
- County Durham Practice Framework: Single Assessment Procedure & Practice Guidance.
- Keeping Children Safe in Education. September 2024

Safeguarding throughout school life

Caring ethos

We aim to create and maintain a **caring ethos** where all children and adults feel safe, secure and valued. If children feel happy and enjoy school this will encourage good attendance and then create conditions in which they can do their best in every area of school life. Our schools operate as a listening school where children can approach adults with concerns. These will be taken seriously and relevant local multi-agency safeguarding procedures followed without delay if there is a risk/likelihood of, or actual **significant harm**.

School staff are well placed to observe children and identify those whose behaviour may suggest that they may be experiencing a mental health concern or are at risk of developing one. The Trust has recently introduced a pupil wellbeing policy to support the mental wellbeing of our children.

All school staff are aware that mental health concerns can, in some cases, be an indicator that a child has suffered or is at risk of suffering abuse, neglect or exploitation.

All of our Trust Schools have a member of staff that is trained and qualified as a Mental Health First Aider.

Curriculum

Children have access to an appropriate curriculum, including the teaching of RSE and Health Education differentiated to meet their needs. This enables them to learn to develop the necessary skills to build self-esteem, respect others, defend those in need, and resolve conflict without resorting to violence. Children learn skills to question and challenge to enable them to make informed choices now and later in life. A protective factor for children is personal resilience including strong social and emotional skills. All work with children which boosts confidence and self-esteem is valuable to protect them from peer pressure and outside influences detrimental to their physical and mental well-being.

Children are encouraged to express and discuss their ideas, thoughts and feelings through a variety of activities and have access to a range of cultural opportunities which promote respect and empathy for others. As part of our Prevent duty under s.26 of the Counterterrorism and Security Act 2015, we are aware of the importance of building pupils' resilience to radicalisation by promoting fundamental British values and enabling them to challenge extremist views. Schools can build pupils' resilience to radicalisation by providing a safe environment for debating controversial issues and helping children and young people understand how they can influence and participate in decision-making.

Many areas of the curriculum include age-appropriate opportunities for children and young people to discuss and debate important issues including lifestyles, health, safety, and well-being (physical and emotional), family life, child-care, and parenting, forced marriage, domestic abuse, religious beliefs, and practices as well as human rights issues. Through these, we support children and young people to recognise and manage risk, make safer choices, and recognise when pressure from others threatens their personal safety and wellbeing. They can develop effective ways of resisting pressure, including knowing when, where and how to get help.

Universal services and specialist support staff

The following professionals are also available to support individual children in our schools as appropriate:

- Designated Safeguarding Leads and SENDco

- First Aider for Mental Health
- One Point
- The school nursing team
- Parent Support Adviser
- Attendance and Inclusion Officers
- School Counsellor
- Educational Psychologist
- Child and Adolescent Mental Health Service
- Learning mentors

The following **visitors** also contribute to our work to safeguard and promote the welfare of our pupils:

Community police, Jet and Ben stranger danger, Fire Brigade/safety carousels, and the NSPCC.

Childcare Arrangements Before and After School (including extra-curricular activities)

- Breakfast club
- Tea-time Club
- After-school activities on and off site
- Wrap around childcare

From time to time, these clubs may be available in our Trust schools. Such clubs all provide further opportunities for pupils to develop positive and caring relationships with adults, who themselves will be trained to be aware of signs and behaviours that could suggest concerns. Supportive relationships outside the home, such as those with adults in school and other children, are additional protective factors that boost children's resilience. Staff will always work with children in a professional way and are reminded to respond to disclosures sensitively and appropriately. All adults in school know the names of the designated safeguarding leads and should be made aware of their responsibility to pass on any issues of concern without delay and make a written record.

Working with parents and carers

Our schools believe in effective communication with parents and carers. We welcome parent/carer views and concerns about the welfare of their children and use this feedback to regularly review our practices. Parental views may be obtained in the following ways:

- Surveys
- Questionnaires
- Parent's evenings

We keep parents informed about important and topical issues, including child protection elements of safeguarding, in the following ways:

- Newsletters
- Email's/Texts home
- School Website

We aim to have good working relationships with parents and carers and to work in partnership with them through transparency and honesty. However, we do not forget that their child's needs and welfare are our paramount concern, thus obtaining consent to take matters further is **not** always appropriate.

4. Child Protection within Safeguarding Arrangements for all Children/Young People in School

There are a series of layers of care and intervention ranging from safeguarding for all/universal services (single-agency activities) through to multi-agency work under the Children Acts 1989 and its amendments:

- Safeguarding arrangements in school
- Early Help within universal services
- More complex cases requiring Early Help
- Child in Need yet consent required as for Levels 2 and 3
- Child Protection
- Durham Safeguarding Children's Partnership guidance and procedures (see <https://www.durham-scp.org.uk/>)

The Growing Up in County Durham Strategy

The Growing Up in County Durham Strategy was prepared jointly by all public services, voluntary and community services, including the Council, local health services and the police who work together to improve outcomes for children, young people and their families through the Children and Families Partnership. It can be accessed here: <https://countydurhampartnership.co.uk/health-wellbeing-board/growing-up-in-county-durham-strategy/>

Life at Home

The Framework for Assessment triangle, reproduced below, summarises every aspect of a child's life under three headings and is mirrored in the Referral form for First Contact Service.

- Child's developmental needs (How I grow and develop)
- Parenting capacity (What I need from people that look after me)
- Family and environmental factors (My wider world)

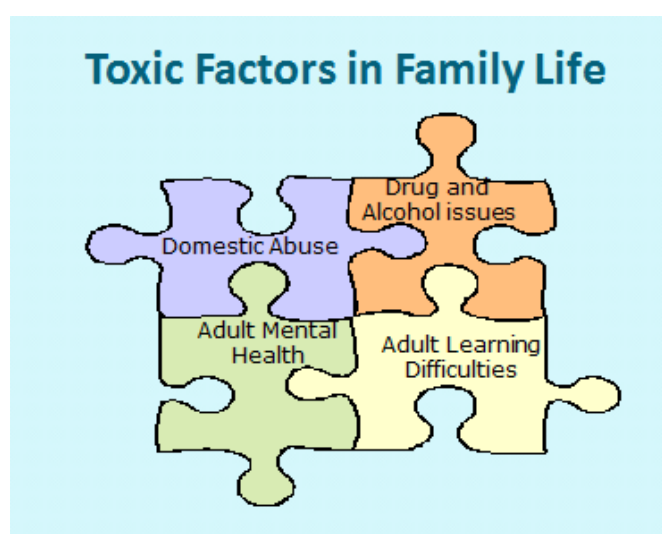


Aspects from all three domains combine in home life and staff and adults in school should be mindful of these connections as they work with children and their parents/carers in school.

Our schools believe that it is essential to work with parents and carers in the best interests of their children. However, good relationships with parents and carers should not detract from our primary concern which is the welfare of children in this school.

Staff are made aware in training of the ‘toxic quad.’ issues in home life that could have an impact on the way children are parented (Munroe, 2010). The Government research into Serious Case Reviews reveals that the presence of one or more of the following issues could have a detrimental impact on parenting of children in that household:

- Domestic abuse (violence)
- Substance misuse (alcohol and or drugs)
- Adult mental health
- Learning Disabilities



Neglect is the largest category for children being on the Child Protection list (nationally and in Durham). Durham DSCP have produced Neglect Practice Guidance. It can be found within the County Durham Children and Families Practice Toolkit here: [County Durham Children & Families Practice Toolkit \(durham-scp.org.uk\)](http://durham-scp.org.uk)

Signs and behaviours of concern

All of our staff are familiar with KCSIE September 2024, and their responsibilities highlighted within this (paras 18 to 55).

All staff, but especially the designated safeguarding lead (and deputies) should consider whether children are at risk of abuse or exploitation in situations outside their families. Extra familial harms take a variety of different forms and children can be vulnerable to multiple harms including (but not limited to) sexual abuse (including harassment and exploitation), domestic abuse in their own intimate relationships (teenage relationship abuse), criminal exploitation, serious youth violence, county lines and radicalisation. Keeping Children Safe in Education, September 2024, Part One (para 21).

Paragraph 18 of the document emphasises that staff should be particularly alert to the need for **early help** for the following groups of children:

- is disabled or has certain health conditions and has specific additional needs

- has special educational needs (whether or not they have a statutory Education, Health and Care plan)
- has a mental health need
- is a young carer
- is showing signs of being drawn in to anti-social or criminal behaviour, including gang involvement and association with organised crime groups or county lines
- is frequently missing/goes missing from education, home or care,
- has experienced multiple suspensions, is at risk of being permanently excluded from schools, colleges and in Alternative Provision or a Pupil Referral Unit.
- is at risk of modern slavery, trafficking, sexual and/or criminal exploitation
- is at risk of being radicalised or exploited
- has a parent or carer in custody, or is affected by parental offending
- is in a family circumstance presenting challenges for the child, such as drug and alcohol misuse, adult mental health issues and domestic abuse
- is misusing alcohol and other drugs themselves
- is at risk of so-called 'honour'-based abuse such as Female Genital Mutilation or Forced Marriage
- is a privately fostered child.

All staff should receive appropriate safeguarding and child protection training (including online safety which, amongst other things, includes an understanding of the expectations, applicable roles and responsibilities in relation to filtering and monitoring - see para 140 for further information) at induction. The training should be regularly updated. In addition, all staff should receive safeguarding and child protection (including online safety) updates (for example, via email, e-bulletins, and staff meetings), as required, and at least annually, to continue to provide them with relevant skills and knowledge to safeguard children effectively. Keeping children safe in education, September 2024, Part One (para 12).

In our schools we do these regular updates through:

- Case study discussion
- Staff briefings
- Notice-boards

Notes of these and attendance lists at briefings are kept.

Our schools understand that it is best practice to discuss concerns with parents/carers before contacting First Contact Service (providing this does not present a delay), or unless by doing so the child would be put at further risk of harm. First Contact Service: 03000 267979.

Where a child is suffering, or is likely to suffer from harm, it is important that a referral to children's social care (and if appropriate the police) is made immediately.

Anyone can make a referral. When referrals are not made by the designated safeguarding lead, the designated safeguarding lead should be informed, as soon as possible, that a referral has been made.

Early Help Assessment Procedure & Practice Guidance

'All staff should be prepared to identify children who may benefit from early help. Early help means providing support as soon as a problem emerges at any point in a child's life, from the foundation years through to the teenage years. KCSIE 2024 (para 6). This relates to work with other universal agencies and following DSCP procedures and guidance.

A new Early Help Assessment and Child and Family Plan has been developed by partners, children, young people, parents and carers which will help families get the support they need at the earliest opportunity.

It is much more streamlined, family friendly and signs of safety/wellbeing focussed. The documents can be accessed through the [Children's Services Portal](#)

Our school is aware that *'no single practitioner can have a full picture of a child's needs and circumstances'*. Also, that *'if children and families are to receive the right help at the right time, **everyone** who comes into contact with them has a role to play in identifying concerns, sharing information and taking prompt action'*. KCSIE 2024 (para 3).

All Designated Safeguarding Leads receive Safeguarding Training appropriate to their status and responsibilities. DSL's receive a refresher every 2 years thereafter. All other Trust staff receive Safeguarding Training to Level 1 and any other training to ensure this policy is implemented effectively. The Training is delivered via Durham Safeguarding Children Partnership/National College on-line or delivered internally by Trust Staff that are qualified to do so. Updates are provided to all staff annually.

This school believes that information sharing is a key element when delivering coordinated services for children and young people. It is essential to enable early help and support and for promoting child protection and welfare. Our staff understand when, why and how they should share information so that they can do so confidently and appropriately as part of their day-to-day practice.

Trust schools work with the consent of parents and carers to jointly undertake assessments where an unmet need has been identified. However, we are aware that it may be necessary to meet with other services and agencies even if this consent for a 'Team around the Family' meeting is not forthcoming. These professionals' meetings are important to share concerns, suggest ways forward along with further work to encourage participation by parents/carers in early help processes One Point colleagues and Early Help Advisers are also a useful source of advice in these circumstances.

Guidance on Early Help in County Durham can be found here: <https://durham-scp.org.uk/professionals/early-help/> This includes information on how to make a request for additional early help and provides details of Locality Early Help Conversations.

Professionals can make a request for (additional) early help by completing an on-line Early Help Request Form on the [Childrens Service Portal](#) or by telephoning the Early Help Triage Team on 03000 267 979, Option 1, Option 2, Option 4, (Mon - Thurs 08.30 - 17.00, Fri 08.30 - 16.30)

Team around the Family (TAF) is an early means of intervention to provide appropriate advice and support for the parents/carers and young person by working with appropriate local agencies through Team around the Family arrangements.

Durham Multi-Agency Safeguarding Hub (MASH)

Where concerns are identified as amber or red on the [MASH Process Pathway](#), our school will cooperate promptly and fully, with relevant information, to inform further assessments undertaken by the MASH team.

Child in Need

Section 17 of the 1989 Children Act
Working Together to Safeguard Children 2018

“A child in need is defined under the Children Act 1989 as a child who is unlikely to achieve or maintain a reasonable level of health or development, or whose health and development is likely to be significantly or further impaired, without the provision of services; or a child who is disabled. Local authorities are required to provide services for children in need for the purposes of safeguarding and promoting their welfare. Children in need may be assessed under section 17 of the Children Act 1989” KCSIE 2024 (para 60).

This school recognises the importance of early support and intervention work in more complex cases, undertaken with the consent of parents and carers, and follows the [Thresholds](#) guidance document which sets out local criteria for action and includes links to additional information which may assist professional judgement in understanding and subsequently meeting a child and families needs. Further DSCP toolkits and guidance can be found [here](#).

Child Protection and significant harm

Section 47 of the 1989 Children Act
Working Together to Safeguard Children 2018

‘Local authorities, with the help of other organisations as appropriate, have a duty to make enquiries under section 47 of the Children Act 1989 if they have reasonable cause to suspect that a child is suffering, or is likely to suffer, significant harm. Such enquiries enable them to decide whether they should take any action to safeguard and promote the child’s welfare and must be initiated where there are concerns about maltreatment. This includes all forms of abuse, neglect and exploitation.’ KCSIE 2024 (para 61)

Significant harm is where some children are in need because they are **suffering, or likely to suffer, significant harm**. This is the threshold that justifies compulsory intervention in family life in the best interests of children.

Prepare for the unexpected

Our staff are aware from their training that some children might display worrying signs/symptoms or disclose information suggesting abuse when they have never previously given rise to concern. Staff will contact the designated safeguarding lead for child protection **without delay** so concerns can be discussed with First Contact Service as soon as possible. In all cases, it will be borne in mind that other siblings might be at risk in the household as well as the one presenting concerns in school.

*‘Staff working with children are advised to maintain an attitude of ‘it could happen here’ where safeguarding is concerned. When concerned about the welfare of a child, staff should always act in the **best interests of the child**’.* KCSIE 2024 (para 49).

Low Level Concerns

Please see: KCSIE 2024 (paras 440 - 447).

As part of our safeguarding culture, ALL concerns regarding adults are shared responsibly in line with our school's safeguarding reporting systems and will be recorded in writing and held securely in accordance with our Low Level Concerns Policy and Guidance. Records will be reviewed so that potential patterns of concerning, problematic or inappropriate behaviour can be identified and appropriate actions taken.

We will ensure that:

- staff are clear about what appropriate behaviour is, and are confident in distinguishing expected and appropriate behaviour from concerning, problematic or inappropriate behaviour, in themselves and others;
- staff know how to share any low-level safeguarding concerns and are empowered to do so;
- unprofessional behaviour is addressed and the individual is supported to correct it at an early stage;
- we will provide a responsive, sensitive and proportionate handling of such concerns when they are raised;
- we will use concerns to help identify any weakness in the school safeguarding system.

We will instil a culture where staff feel safe to report any concerns using our safeguarding reporting system identified in this policy. We would also encourage the staff member themselves to report any behaviour that could be classed as a low level concern. Where the report has been made by a third party, as much evidence as possible will be gathered by the head teacher/principal from the person reporting the concern, the individual named and any witnesses. All of this will be recorded to determine whether any further action needs to be taken alongside a recorded rationale as to the decisions taken.

In the case of reports about supply staff and contractors, we will report any concerns to their line managers so that any concerning, problematic or inappropriate patterns of behaviour can be identified.

We will retain information regarding low level concerns in line with our school's Low Level Concerns Policy. KCSIE 2024, paragraph 447 recommends at least until person leaves school's employment.

'...Low-level concerns should not be included in references unless they relate to issues which would normally be included in a reference, for example, misconduct or poor performance. It follows that a low-level concern which relates exclusively to safeguarding (and not to misconduct or poor performance) should not be referred to in a reference. KCSIE 2024, paragraph 448-

Please refer to our Low Level Concerns Policy and reporting form.

5. Multi-Agency Work in Child Protection

See Appendix 1: Summary of multi-agency meetings.

For up to date school responsibilities and LA arrangements and procedures please see the local partnership website - <https://durham-scp.org.uk/practitioners/>

Initial Child Protection Conference: school responsibilities

See local partnership procedures for more details: <https://durham-scp.org.uk/about-us/multi-agency-safeguarding-arrangements/>

Following the final strategy meeting (some complex cases like forced marriage, fabricated and induced illness and organisational abuse may require several strategy meetings) a decision might be made to hold an Initial Child Protection Conference. This work continues within Family First teams within the County.

A conference will be called if there is thought to be an on-going risk or likelihood of significant harm to the child(ren). The date will be within **15 working days** after the last strategy meeting.

Attendance at Conference

It is understood that appropriate school staff will make every effort to attend (unless the date coincides with school holidays).

Preparation of a report

Schools would be expected to prepare a report and may wish to amplify and develop information provided on the referral form [Safeguarding-Referral-Form-June-2024.docx \(live.com\)](#) as the basis of their report. <https://durham-scp.org.uk/practitioners/guidance-toolkits-and-forms-for-practitioners/child-protection-conference-report-template/>

Chronology of significant events

A single-agency chronology should also be produced for this meeting. The detailed 'in house' school chronology should be streamlined to include key relevant incidents noted by school.

Sharing of the report

The report should be shared with parents/carers of the child at least **two working days** before the conference. Part of the report may also be shared with the young person, where age appropriate. This will give the family a chance to question or clarify any issues raised within the report prior to the conference.

The report will be passed to the Conference Clerk via the e-mail system ready for dissemination to other professionals attending the conference.

Membership of a Core Group

Trust schools recognise that membership of a core group is a responsibility that necessitates time and commitment to attend regular meetings and complete the work detailed in the Child Protection Plan.

The merged multi-agency chronology will be regularly updated as part of this on-going work.

Review Child Protection Conference

The Trust school will complete the relevant report for the first review conference, after 10 weeks and for any subsequent reviews at intervals of 5 months. The report will detail work undertaken by the school with parents/carers and the child to complete the tasks assigned

in the Child Protection Plan. This report should be shared **7 days** before the conference takes place. This report will detail the progress made towards the tasks outlines on the Child Protection Plan.

6. Information-Sharing

Staff at our school are aware of the need to share information appropriately. KCSIE 2024 (Paras 114 - 122). If there are concerns that sharing of information with individuals could result in significant harm to any individual, legal advice will be sought before the information is shared.

If there are concerns that sharing of information with individuals could result in significant harm to any individual, legal advice should be sought before the information is shared.

Our schools take care to ensure that information about a child is only given to the appropriate external people or agencies. Staff will take names and ring back if they are unsure. All staff within school will be aware of the confidential nature of personal information about a child and the need for maintaining confidentiality. They will seek advice about parental responsibility issues if they are unsure.

Parents/Carers

Where we have concerns about a child's safety and decide to share information to protect them from harm, we will explain to parent(s) or carer(s), and the child as appropriate, what information we intend to share, with whom and why, wherever it is safe and practical to do so. This is unless there are concerns that seeking to discuss a concern could result in a risk of harm to any individual.

Parents must be aware that once matters have been referred to the First Contact Service the school can only explain the procedure and is not able to give 'progress reports' on the case.

School staff

There is a delicate balance to be struck between alerting members of staff to the concern about the child and the need to protect the child from too many people knowing. Information will therefore only be divulged on a 'need to know' basis. Other members of staff need to know sufficient detail to prepare them to act with sensitivity to a distressed pupil. They do not need to know details.

Children transferring to another school

Where a child is the subject of a Child Protection Plan and they move to another school, the designated lead professional will inform the new school immediately and arrange the handover of confidential information securely and separately from other records.

If a child for whom there are other existing serious concerns transfers to another school, the new receiving school will be informed immediately, and written records will follow. Both schools should maintain evidence of the secure transfer and receipt of information. Schools that both use CPOMS should transfer this information electronically.

Data that is not being transferred to another school should be kept in line with the school's Data Retention Policy, e.g. electively home educated pupils or moving to full time employment.

County Guidance and protocols

Please see the following guidance:

- [‘Information sharing’](#) on the Durham Safeguarding Children Partnership website
- [DfE Information Sharing: Advice for practitioners providing safeguarding services to children, young people, parents and carers - May 2024](#)
- [The Data Protection Act 2018](#)

Further advice about legal issues is available from Legal Services

7. Allegations Against Staff and Volunteers

See Part Four of Keeping Children Safe in Education 2024, paras 359- 452.

[The Durham Safeguarding Children Partnership website](#) provides information about dealing with allegations against staff and volunteers (including supply staff) who have contact with children and young people in their work or activities.

Allegations of abuse by adults and peers in schools must be investigated in accordance with the Trust Policy which is based upon [DSCP procedures](#). It is therefore important that any concerns or allegations relating to adults and peers are referred to the Head Teacher immediately.

Where concerns relate to the Head Teacher of our Trust schools, these should be referred to the Trust Chief Executive Officer and/or the Local Authority Designated Officer in accordance with Trust Policy. The policy relating to Dealing with Allegations of Abuse Against Staff can be found on the Trust Website at www.tudhoelearningtrust.co.uk

When dealing with any allegation against staff, it is vital to keep the welfare of the child as the central concern. However, as in all child protection issues, a balance needs to be struck between supporting and protecting the child and keeping the effects of possibly false allegations to a minimum. Thus, urgent consideration should be given to the substance of the allegations.

Receiving an allegation

On receiving an allegation, the Head Teacher will proceed in line with Trust procedures - consulting immediately with LA officers (LADO, Local Authority Designated Officer, see contact details at front of policy) and/or informing the First Contact Service. If the LADO is unavailable there should be no delay in discussing with First Contact. **The Head Teacher must not start to investigate.**

If an allegation is made for a person not directly employed by the school recognised procedures should be followed. This includes supply staff, sports coaches and any individual or organisation using the school premises for the purposes of running activities for children (for example community groups, sports associations, or service providers that run extra-curricular activities). Under no circumstances should a school cease the use of a supply teacher, sports coach etc. due to safeguarding concerns without liaising with the LADO. (See KCSIE 2024, paras 380 - 383).

Allegations regarding the Head Teacher should be passed to the Trust Chief Executive Officer. Should this lead to delay, the person receiving details of the allegation should follow the advice above and report the matter immediately to the LADO and First Contact Service.

At this stage the Head Teacher should not be informed of the allegation (the same process as for any member of staff or adult in school). The Chair of Governors should be informed as soon as possible and asked to contact the LADO.

Where it is suspected that a crime has been committed, then the matter should be reported to the police with immediate effect.

<p style="text-align: center;">Local Authority Designated Officer (LADO) Sharon Lewis / Louise Brookes 03000 268835 First Contact Service 03000 26 79 79 CYPSSLADOsecure@durham.gov.uk</p>

Carrying out an investigation

Investigations will be carried out by the appropriate agencies. In dealing with any allegation the Head Teacher and governors need to balance:

- The seriousness of the allegation.
- The risk of harm to pupils.
- Possible contamination of evidence.
- The welfare of the person concerned.

Suspension of the member of staff/adult in school will be considered:

- if there are any grounds for doubt as to the suitability of the employee to continue to work
- where suspension may assist in the completion of an investigation.

Suspension should not be an automatic response. It should only be considered where there is cause to suspect child(ren) is/are at risk of harm or the case is so serious there may be grounds for dismissal. If in doubt, advice should be sought from HR and the LADO. Based on advice and a risk analysis, alternatives may be redeployment of the individual; providing an assistant to be present when the individual has contact with children; moving the child/children, but only if it is in the best interests of the child, their views have been sought and parents have been consulted. See KCSIE 2024, Part Four, paras 386-393.

During the investigation, support will be offered to both the pupil making the allegation and the adult / peer concerned. The welfare of a child is paramount, and this will be the prime concern, however employers have a duty of care to their employees and should act in accordance with paragraph 395 of KCSIE 2024.

Once Police and Intervention and Assessment teams have decided if further action is necessary or not, a meeting will take place with a representative from the school, LADO and HR to decide next steps and if an internal disciplinary investigation is needed. Paragraphs 397-405 KCSIE 2024.

Recommendations following an investigation

Where recommendations are made to school regarding the outcome of a Child Protection investigation, the school will advise Children and Young People's Services regarding their response to the recommendation. For example, if a person is suspended and returns to school, the date of that return should be communicated.

The following definitions are now used when determining the outcome of allegation investigations:

- **Substantiated:** there is sufficient evidence to prove the allegation;

- **Malicious:** there is sufficient evidence to disprove the allegation and there has been a deliberate act to deceive or cause harm to the person subject to the allegation;
- **False:** there is sufficient evidence to disprove the allegation;
- **Unsubstantiated:** there is insufficient evidence to either prove or disprove the allegation. The term, therefore, does not imply guilt or innocence.
- **Unfounded:** to reflect cases where there is no evidence or proper basis which supports the allegation being made.

Where it is considered that an individual has engaged in conduct that has harmed (or is likely to harm) a child or if a person otherwise poses a risk to harm a child, the Head Teacher and/or Chief Executive Officer will make a referral to the TRA and DBS in line with their legal requirement to do so. (KCSIE 2024 paras 409 & 410).

8. Safe Touch

Physical contact other than to control or restrain

(Paragraph 166-168, KCSIE 2024). Our school has a policy/guidelines on the use of touch, including an Intimate Care policy and this includes such points as:

- assisting in the washing of young children who have wet/soiled themselves.
- intimate care risk assessments for certain children with medical needs or disabilities.
- using physical contact to demonstrate exercises or techniques, for example, in PE, sports coaching or other practical subjects.
- administering First Aid.
- supporting younger children and children with special needs who may need physical prompts or help.
- giving appropriate comfort to a child who is distressed.
- recognising that physical contact is a sensitive issue for some cultural groups.
- acknowledging that physical contact becomes increasingly open to question as children reach and go through adolescence.
- ensuring a consistent approach where staff and pupils are of different genders.
- acknowledging that innocent and well-intentioned physical contact can sometimes be misconstrued.
- having a prescribed handling policy for children requiring complex or repeated physical handling, with specific training for staff who deal with them.

9. Physical Control and Restrictive Physical Intervention: Use of Reasonable Force

Our school has a policy on the use of restrictive physical interventions covering the appropriate use of reasonable force that all staff are made aware of and follow.

Our school policy relates to the following: [DfE Guidance: Use of Reasonable Force in Schools](#).

Our schools Policy on the Use of Restrictive Physical Interventions gives guidance on:

- when it is appropriate for staff to use physical control and restraint
- who is allowed to use physical control and restraint
- what forms of physical control and restraint may take place in particular circumstances
- what forms of physical control and restraint are not acceptable

- how the additional vulnerability of pupils with SEND, mental health problems or medical conditions will be considered
- ensure our duties under the Equality Act 2010 are considered
- recording of incidents where physical handling has been used
- the Policy also makes it clear that corporal punishment is NOT allowed.

10. The Prevent Duty

(Pages 156 to 158, KCSIE 2024) The Counter Terrorism and Security Act 2015 places a duty on certain bodies, including schools, to have 'due regard to the need to prevent people from being drawn into terrorism'. The DfE has produced non-statutory advice, '[The Prevent Duty: an introduction for those with safeguarding responsibilities](#)' September 2023.

"Similar to protecting children from other forms of harm and abuse, protecting children from this risk" is a part of our safeguarding approach as it is possible to intervene to prevent vulnerable people being radicalised. We use the above document and advice in the following documents [The Prevent duty: safeguarding learners vulnerable to radicalisation - GOV.UK \(www.gov.uk\)](#) and [Managing risk of radicalisation in your education setting - GOV.UK \(www.gov.uk\)](#) to support us in our work to form risk assessments, working in partnership, staff training, IT policies and building children's resilience to radicalisation.

In our Trust schools:

- staff can identify children who may be vulnerable to radicalisation. Information or concerns are shared with the Designated Safeguarding Lead in the same way as other information that might be a safeguarding concern, who will then follow procedures in line with DSCP guidance.
- policies and procedures are in line with those of DCC, Durham Constabulary and the DSCP.
- throughout the life of the school as well as in specific lessons to build pupils' resilience to radicalisation by promoting fundamental British values and enabling them to challenge extremist views.
- Robust online policies are mindful of guidance within Keeping Children Safe in Education, September 2024 and DfE guidance '[Teaching Online Safety in School](#)'.

[2023 Prevent Duty Guidance: for England and Wales](#), paragraph 64, notes '*Schools should be safe spaces in which children and young people can understand and discuss sensitive topics, including terrorism and the extremist ideas that are part of terrorist ideology, and learn how to challenge these ideas. The Prevent duty is not intended to limit discussion of these issues. Schools should, however, be mindful of their existing duties to forbid political indoctrination and secure a balanced presentation of political issues*'

We will follow the County Durham Prevent Referral Flowchart (September 2022, Appendix 2) when any concerns are identified. Through discussion with the specialist colleagues at Durham Constabulary it may be appropriate to make a referral to the Channel programme. This programme focuses on support at an early stage, tailor-made to the individual young person. Engagement with the programme is entirely voluntary. A school representative may be asked to be a member if a student from the school is to be discussed at the Channel panel.

FIMUNorth@CTPNE.police.uk

<https://www.durham.police.uk/advice/advice-and-information/t/prevent/prevent/beta/prevent-team-referral/>

11. Child Sexual Exploitation (CSE)

We ensure all of our staff are trained to be aware of young people who could be at risk of sexual exploitation. See Keeping Children Safe in Education, September 2024 (para 38-40).

Refer also to:

[Sharing nudes and semi-nudes: advice for education settings working with children and young people](#)

CSE is where an individual or group takes advantage of an imbalance of power to coerce, control, manipulate or deceive a child into taking part in any sexual activity and can be experienced by both boys and girls: It is a form of child sexual abuse.

Sexual abuse may involve both physical and non-contact activities. It can occur over time or be a one-off occurrence. Our staff know that some children may not realise they are being exploited, for example, if they believe they are in a genuine romantic relationship and will handle these situations appropriately.

Durham DSCP has a section of their website devoted to resources, guidance, and a risk assessment matrix that assists schools: [Child Exploitation Risk Assessment Information Form \(durham-scp.org.uk\)](#). The multi-agency ERASE team website is available as a source of help and information for children, parents and the wider community, <http://www.eraseabuse.org/Pages/Home.aspx>.

12. Female Genital Mutilation

If there are concerns that an act of FGM has been undertaken on a girl under the age of 18, this MUST be reported to the police immediately.

Whilst all staff should speak to the designated safeguarding lead (or deputy) with regard to any concerns about female genital mutilation (FGM), there is a specific legal duty on teachers. If a teacher, in the course of their work in the profession, discovers that an act of FGM appears to have been carried out on a girl under the age of 18, the teacher must report this to the police. KCSIE, September 2024 (Para 42)

FGM comprises all procedures involving partial or total removal of the external female genitalia or other injury to the female genital organs. This is illegal in the UK (The FGM Act 2003), abusive and has varied long-lasting consequences for the young girl.

There is an FGM Helpline also on 0800 028 3550 or they can be contacted via email fgmhelp@nspcc.org.uk

Guidance leaflets have been produced by the Home Office & the National FGM Centre:

<http://nationalfgmcentre.org.uk/wp-content/uploads/2019/06/FGM-Schools-Guidance-National-FGM-Centre.pdf>

The Home Office has also produced some free, informative, on-line training that designated leads might wish to access:

[FGM Awareness & Prevention Training | iHASCO](#)

So-called 'Honour'-Based Abuse (including FGM & Forced Marriage (pg. 160 KCSIE 2024)

This encompasses incidents or crimes which have been committed to protect or defend the honour of the family and/or the community (pg 160 KCSIE 2024).

We recognise that all forms of Honour Based Abuse are abuse and if our staff have a concern regarding a child who might be at risk or who has suffered this, it will be reported to the DSL and local safeguarding procedures will be followed.

Virtual college e-learning: Recognising and Preventing FGM.

13. Online Safety

See KCSIE - September 2024 (paras 134 - 154)

Our school has a separate Online Safety Policy which links to KSCIE 2024 and take account [DfE 'Teaching Online Safety in Schools'](#) guidance.

There is a Professionals Online Safety Helpline 0844 381 4772

Schools are reminded that a criminal offence has been committed if a person aged 18 or over intentionally communicates with a child under 16, who the adult does not reasonably believe to be 16 or over, if the communication is sexual or if it is intended to encourage the child to make a communication which is sexual. The offence will be committed whether or not the child communicates with the adult. This is the offence of sexual communication with a child under section 67 of the Serious Crime Act 2015.

On the DSCP website in the multi-agency online Procedures Manual, Part 2, Safeguarding Practice Guidance there is further information under ['Online safety: Children Exposed to Abuse through the Digital Media'](#)

14. Child on Child Abuse Sexual Violence and Sexual Harassment

Our school has a zero-tolerance approach to child-on-child abuse including sexual violence and sexual harassment (KCSIE 2024: Part One, paras 30 - 33 and Part Five). Our staff are aware that children are capable of abusing other children, and that this can happen both in and out of school, online and offline.

Refer also to:

[Sharing nudes and semi-nudes: advice for education settings working with children and young people](#)

LGFL ['Undressed'](#) provided schools advice about how to teach young children about being tricked into getting undressed online in a fun way without scaring them or explaining the motives of sex offenders.

Education settings are an important part of the inter-agency framework not only in terms of evaluating and referring concerns to Children's Services and the Police, but also in the assessment and management of risk that the child or young person may pose to themselves and others in the education setting, and we ensure that we fully participate in this role.

All staff are supported to understand, that, even if there are no reports in our schools, it does not mean it is not happening, it may be the case that it is just not being reported. As such, it is important if staff have any concerns regarding child on child abuse, sexual

violence or sexual harassment, they should speak to the designated safeguarding lead (or deputy).

The Trust schools will respond to all signs, reports and concerns of child-on-child abuse including sexual violence and harassment, including those that have happened outside of the school or college premises, and/or online. We have clear systems in place that all staff are aware of and will work with our local authority partners in children's social care and police where a crime may have been committed. Where a report of sexual violence has occurred, our DSL or deputy DSL will make an immediate risk and needs assessment taking into account the 5 points identified in KCSIE 2024, paragraph 487. The need for a risk assessment for sexual harassment will be considered on a case-by-case basis.

We ensure that all staff understand what constitutes child on child abuse or sexual violence and sexual harassment and that children's sexual behaviour exists on a wide continuum from normal and developmentally expected to inappropriate, problematic, abusive and violent. Our Designated Safeguarding Leads and deputies have a good understanding of Harmful Sexual Behaviour in order to support the development of our whole school approach.

In our Trust schools, all staff understand the importance of challenging inappropriate behaviours between children, many of which are listed below, that are abusive in nature. Downplaying certain behaviours, for example dismissing sexual harassment as "just banter", "just having a laugh", "part of growing up" or "boys being boys" can lead to a culture of unacceptable behaviours, an unsafe environment for children and in worst case scenarios a culture that normalises abuse, leading to children accepting it as normal and not coming forward to report it.

Abuse may take different forms for sexual violence and sexual harassment. Please see Paragraphs 458 to 461 in KCSIE 2024.

The following steps are taken in school to minimise these risks. The school:

- will provide a developmentally appropriate Relationships, Sex and Health Education curriculum which develops students understanding of acceptable behaviour and keeping themselves safe and is in line with DfE guidance [Relationships Education, Relationships and Sex Education and Health Education guidance \(publishing.service.gov.uk\)](https://publishing.service.gov.uk)
- will ensure that all reports of alleged abuse or sexual harassment will be acted upon in line with Keeping Children Safe in Education 2024, Part Five.
- will reassure all victims that they are being taken seriously and that they will be supported and kept safe. A victim should never be given the impression that they are creating a problem by reporting sexual violence or sexual harassment. Nor should a victim ever be made to feel ashamed for making a report.
- where a report of rape, assault by penetration, sexual assault or causing someone to engage in sexual activity without consent is made, the starting point is that this will be passed on to the police.
- will have robust risk assessments in place where appropriate and in line with Keeping Children Safe in Education 2024, Part Five.
- have relevant policies in place (e.g., behaviour policy, anti-bullying policy).

The following steps are taken in school to minimise these risks. The school:

- will provide a developmentally appropriate Relationships, Sex and Health Education curriculum which develops students understanding of acceptable behaviour and keeping themselves safe and is in line with DfE guidance [Relationships Education, Relationships and Sex Education and Health Education guidance \(publishing.service.gov.uk\)](https://publishing.service.gov.uk)
- will ensure that all reports of alleged abuse or sexual harassment will be acted upon in line with Keeping Children Safe in Education 2024, Part Five.

- will reassure all victims that they are being taken seriously and that they will be supported and kept safe. A victim should never be given the impression that they are creating a problem by reporting sexual violence or sexual harassment. Nor should a victim ever be made to feel ashamed for making a report.
- where a report of rape, assault by penetration, sexual assault or causing someone to engage in sexual activity without consent is made, the starting point is that this will be passed on to the police.
- will have robust risk assessments in place where appropriate and in line with Keeping Children Safe in Education 2024, Part Five.
- have relevant policies in place (e.g., behaviour policy, anti-bullying policy).

Victims, alleged perpetrators and any other child affected by child-on-child abuse and/or sexual violence or harassment will be supported by a nominated, appropriate member of staff.

15. Child Criminal Exploitation (CCE) Including County Lines

(KCSIE Sept 2004 Paras 35-37 & Annex B p.149)

We will ensure that all staff are aware of the indicators that may signal that children are at risk from or involved with CCE.

CCE is where an individual or group takes advantage of an imbalance of power to coerce, control, manipulate or deceive a child into taking part in any criminal activity and can be experienced differently by both boys and girls:

- in exchange for something the victim needs or wants
- for the financial or other advantage of the perpetrator or facilitator
- through violence or the threat of violence. The victim may have been criminally exploited even if the activity appears consensual. CCE does not always involve physical contact; it can also occur through the use of technology. It can be linked to serious violence.
- specific forms of CCE can include children being forced or manipulated into transporting drugs or money through county lines.

We will ensure that all staff are aware that children can become trapped by this type of exploitation and that, as they become involved, often commit crimes themselves. We will ensure that we recognise their vulnerability as victims even if the activity appears to be something they have agreed or consented to.

Some of the following can be indicators of CCE:

- children who appear with unexplained gifts or new possessions
- children who associate with other young people involved in exploitation
- children who suffer from changes in emotional well-being
- children who misuse drugs and alcohol
- children who go missing for periods of time or regularly come home late
- children who regularly miss school or education or do not take part in education

Please see the home office guidance:

[County lines and criminal exploitation toolkit](#)

[Preventing youth violence and gang involvement - Practical advice for schools and colleges \(publishing.service.gov.uk\)](https://publishing.service.gov.uk)

[Criminal exploitation of children and vulnerable adults: county lines - GOV.UK \(www.gov.uk\)](https://www.gov.uk)

16. Serious Violence

Keeping Children Safe in Education, September 2024 (para 46)

We will ensure that all trust staff are aware of the indicators that may signal that children are at risk from, or involved with, serious violent crime.

Indicators may include:

- Unexplained gifts/new possessions - these can indicate children have been approached by/involved with individuals associated with criminal networks/gangs
- Increased absence from school
- Change in friendship/relationships with others/groups
- Significant decline in performance
- Signs of self-harm/significant change in wellbeing
- Signs of assault/unexplained injuries

Staff will also be made aware that the likelihood of involvement in serious violence may be increased by factors such as:

- being male
- having been frequently absent or permanently excluded from school
- having experienced child maltreatment and having been involved in offending, such as theft or robbery.

Staff will also be advised to access a fuller list of risk factors which can be found in the Home Office's [Serious Violence Strategy](#) and to access the [The Youth Endowment Fund \(YEF\) Toolkit](#) which sets out the evidence for what works in preventing young people from becoming involved in violence.

Please see the home office guidance:

[Criminal exploitation of children and vulnerable adults: county lines - GOV.UK \(www.gov.uk\)](https://www.gov.uk)

17. Mental Health

See Keeping Children Safe in Education 2024 (paras 43-45)

We will ensure that all staff are aware that mental health problems could be an indicator that a child has suffered or is at risk of suffering abuse, neglect or exploitation. If staff have a mental health concern about a child that is also a safeguarding concern, immediate action will be taken following this policy's procedures.

Staff will access training or information so that they are aware of how abuse, neglect and/or other traumatic childhood experiences can impact on children's mental health, behaviour and education.

We will ensure that we access professional advice to support us in identifying pupils suffering from mental health problems as well as following best practice mental health guidance in schools, including the following:

[Mental health and behaviour in schools - GOV.UK \(www.gov.uk\)](https://www.gov.uk)

[Mental wellbeing | Overview | PHE School Zone](#)

18. Domestic Abuse

See Keeping Children Safe in Education, September 2024 (para 41)

All of our staff are trained in understanding the detrimental impact on children of experiencing domestic abuse. We sign up to our local Operation Encompass programme to ensure we are made aware of incidents by our local partners so that we can secure the help that children need and, if required, refer in a timely way to those who have the expertise to help.

Exposure to domestic abuse and/or violence can have a serious, long lasting emotional and psychological impact on children. In some cases, a child may blame themselves for the abuse or may have had to leave the family home as a result.

If staff have a concern about a child or a child makes a report to them, they should speak to the designated safeguarding lead (or a deputy).

SAFEGUARDING POLICY: APPENDIX 1

Multi-Agency Meetings



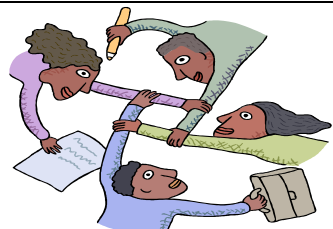
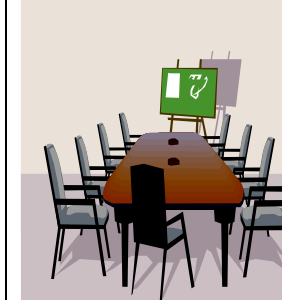
Strategy

●Referral taken up by First contact Service: ‘reasonable cause to suspect child is suffering or likely to suffer significant harm’. ●To agree whether to start s47 enquiries and to begin/complete a core assessment under Child Act 1989. ●Professionals meeting only ●Held at short notice (some professionals may be available by phone). Police Sergeant and investigating officer (VU); Assessment and Intervention Team manager and SW, Health, referrer (if professional) and other relevant colleagues. ●Usually held in A&I Team office, hospital. ●To PLAN how to look into the concern: share information, consider criminal investigation, medicals, interviews etc.



Initial Child Protection Conference

●15 DAYS after last strategy meeting ●Accessible public building: A&I offices ●Parents/carers (supporter/legal adviser) and all relevant professionals who work with family members and children attend ● Conference is to decide whether the child(ren) are at continuing risk of significant harm and whether CP Plan needs to be put in place. ●Tasks: prepare a report for the conference on all children in family you work with ●Share report with parents and carers at least two working days before the conference (open/transparent procedure so parents can know and question all information in advance). ●Ensure that child’s views are given ●Produce single-agency chronology. ●If children not put on list then consideration of services needed, now passes to relevant Child Protection Team.



Group

Core

●10 DAYS later. Date for this meeting and first Review Conference is set at the Initial Conference ●This ‘core’ of essential professionals will work with the family and the young person to try and achieve change and improvement so that the child is not still at continuing risk of harm (these safety issues are dealt with before other ‘welfare’ matters) ● Key worker is the social worker ●The group complete the Child Protection Plan and complete work on the core assessment as part of this ●The chronologies are merged and continuously updated as working documents ●Initially meetings quite frequent but generally held about every 4-6 weeks



Review CP Conference

●10 WEEKS (3 months) before first Review conference. ● Evaluate effectiveness of Core Group in effecting change and better care of the children ● ‘..to review the safety, health and development of the child against the planned outcomes set out in the child protection plan’ ●to see whether CP plan should continue to be in place or should be changed ●Child’s wishes and feelings must be sought and taken into account ●if the child is not still at risk of significant harm then they should not require a CP plan ●Tasks: report needed and shared with parents/carers 7 days prior to conference: evaluation what has changed, the impact on child’s welfare against objectives set out in the plan





Better for everyone



Prevent referral flow chart County Durham

Prevent referral flow chart for County Durham

The Channel Programme is a key part of the Prevent strategy. Section 36 of the Act requires local authorities and others to provide support for people who are vulnerable to being drawn into terrorism, before they commit an offence. This process, known as [Channel](#), operates in the pre-criminal space and aims to provide support to individuals at an early stage and help safeguard them from radicalisation.

